

FM BAND-II COMPACT 2 CAVITIES 1Kw+1Kw COMBINER

Typical separation between frequencies >3 Mhz

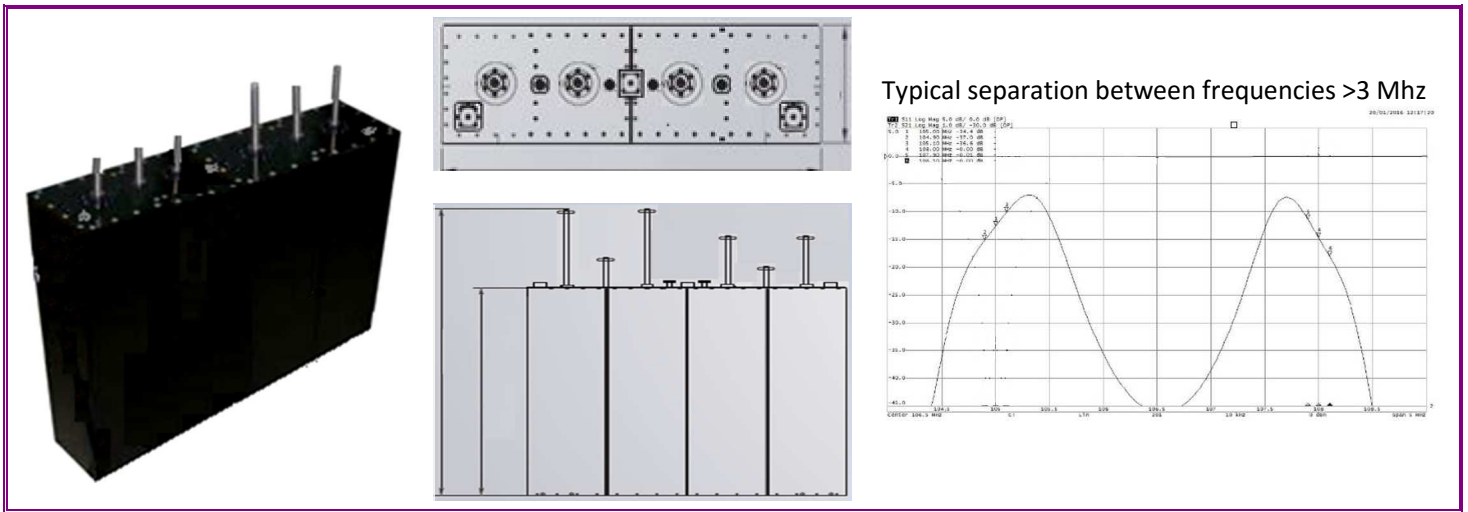
Flexible and compact

Temperature stabilised

Retunable

Cavity at high mechanical stability

Fine Tuning



Typical separation between frequencies >3 Mhz

Electrical Characteristics

Maximum Input Power [W]	1100
Frequency Range [MHz]	87.5 ÷ 108
Insertion Loss [dB] @ Fo	< 0.5
Return loss [dB]	> 30
Input/Output Impedance [Ohm]	50
Minimum Frequency separation	3MHz *

*other under I+D order request

Mechanical Characteristics

Connections	DIN 7/16
Temperature range [C°]	-10 ÷ +50
Overall dimensions [H x W x D] [mm.]	1.160x700x165
Weight [kg.]	27

Materials

Top cover in electrolytic copper
Lateral walls in aluminium
Teflon isolators
Pistons in copper and brass
Hot painting
Stainless steel screw

Frequency [MHz]

	87.5	98.0	108.0
Insertion Loss [dB] Fo ± 100KHz	<0,5	<0,45	<0,4
Insertion Loss [dB] Fo ± 150KHz	<0,45	<0,4	<0,35
Selectivity at 2MHz, Fo ± 100KHz	>24	>23	>22
Selectivity at 2MHz, Fo ± 150KHz	>23	>22	>21
Uncouple between inputs [dB] at 3MHz	>36	>34	>32

