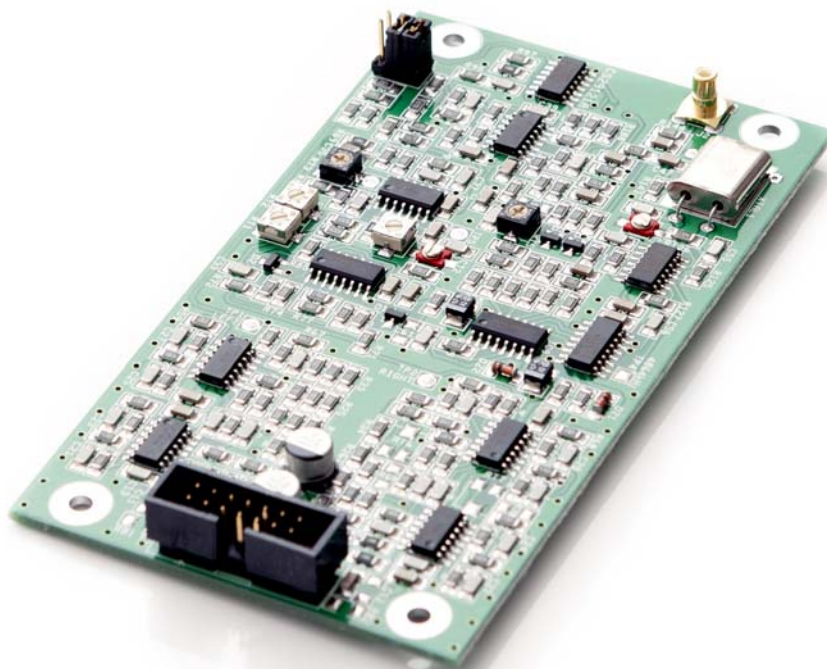


- SEXC23COD2 -

HIGH PERFORMANCE STEREO ENCODER BOARD

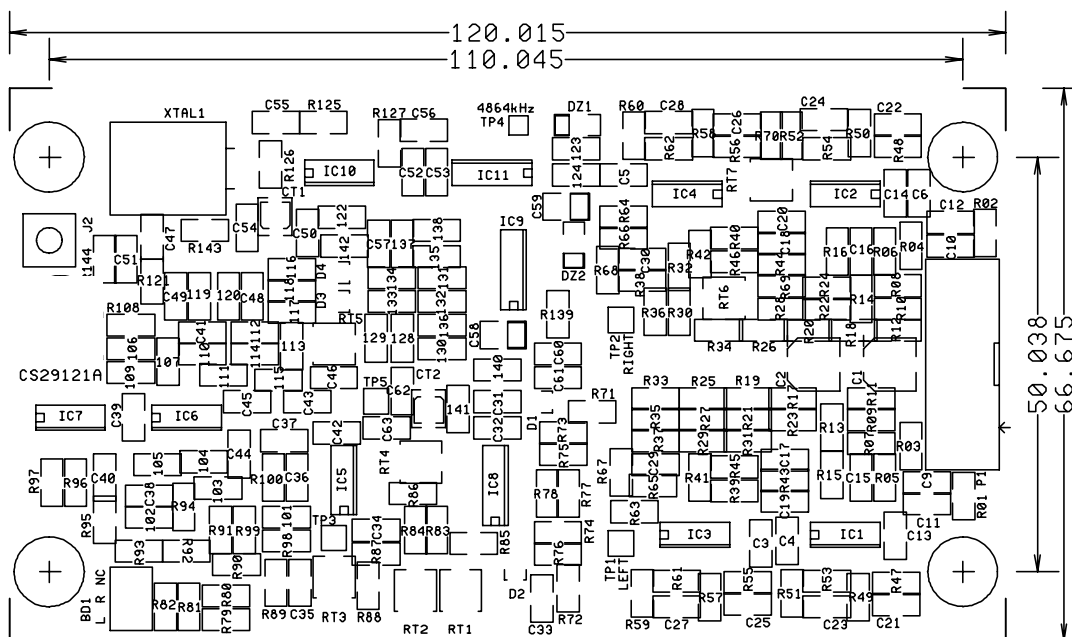


SEXC23COD2 board is a full fladged multiplex stereo encoder specially designed to be incorporated in SIELCO Transmitters. It incorporates the left and right 15kHz channel filters and the management of the monophonic transmission but not the pre-emphasis network which is managed by the transmitter. The card is easily installed in the factory or on the field on any SIELCO FM or STL Transmitter of the EXCxx5, EXCxxGT, EXC18 and EXC19 series.

The use of SMT technology and high quality components has resulted in a small card similar in performances to professional self-standing coders, with striking features of separation and flatness of the sound channel. The card do not requires any calibration on the equipment.

TECHNICAL FEATURES

- LF pass-band:	30 ÷ 15k Hz (±0,05dB tip, ±0,1dB max)	- LF input level:	+6dBm (Zin=100k ohm)
- Stereo separation:	>70dB, tip. 400 ÷ 10k Hz >65dB, min. 30 ÷ 15k Hz	- Mpx output level:	+10dBm (Zout=50 ohm)
- M/S separation:	>45dB, tip. 100 ÷ 10k Hz >35dB, min. 30 ÷ 15k Hz	- Dynamic headroom:	>6dB
- THD distortion:	≤0,02%, tip. 30 ÷ 7,5k Hz ≤0,05%, max.	- DC offset on output:	<20mV
- S/N ratio:	>90dB	- Subcarrier suppression:	>55dB min, 60dB typ.
		- Pilot frequency:	19.000±0,5Hz
		- Pilot tone level:	10% tip. (0 ÷ 14%, adj.)
		- 19kHz synchro out:	1Vpp ±20%
		- Power supply:	±12,5Vdc ±5% / 70mA typ.
		- Dimensions:	120,0x66,7mm



ON BOARD TRIMMER FUNCTION:

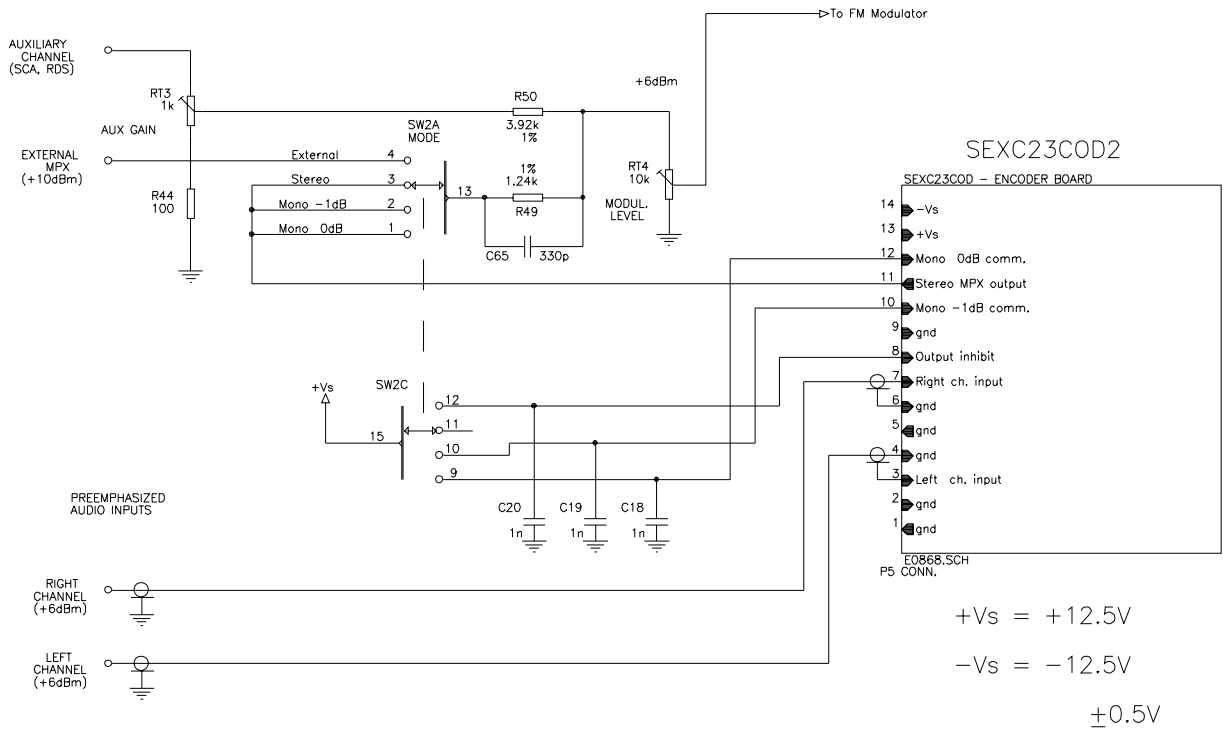
- RT1: Right channel crosstalk suppression
- RT2: Left channel crosstalk suppression
- RT3: Mpx gain fine adjust ($\pm 0.3\text{dB}$)
- RT4: Pilot tone level ($0 \div 13\%$)
- RT5: High frequency phase compensation
- CT1: Time base frequency adjust (when present)
- CT2: Phase regulation between stereo subcarrier and pilot tone

CAUTION:

Tampering with any factory adjustment other than slight modification of pilot tone level may impair overall performances. Declared performances require exact adjustments with state of the art laboratory grade measuring equipment.

INFORMATION HEREBY SUPPLIED ARE AS ACCURATE AS POSSIBLE. HOWEVER ALL SPECIFICATIONS ARE PURELY INDICATIVE: SIELCO RESERVES THE RIGHT TO CHANGE THEM OR THE CIRCUITRY, WITHOUT ANY PREVIOUS ADVICE, IN ORDER TO IMPROVE THE PRODUCT.

USER INTERFACE EXAMPLE (requires external pre-emphasis):



E0679A